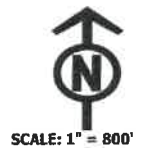


SEGMENT	STREET	FROM	TO
Segment 1	Franklin St	New Rd	Mckenzie
Segment 2	Franklin CT	W. 7th	End
Segment 3	Fallon Ln	McClarnon	Fields
Segment 4	Paragon Way	Fields	End
Segment 5	Warren Way	Fields	End
Segment 6	Preston Dr	McClarnon	Fields
Segment 7	Tinker Trail	Creston Meadow	Rocky Rd
Segment 8	Creston Meadow	Tinker Trail	Rambling Rd
Segment 9	Rambling Rd	Creston Meadow	Gristmill Dr
Segment 10	Gristmill Dr	Rambling Rd	School House
Segment 11	Jefferson Blvd	Main St	End
Segment 12	Madison St	Jefferson	Winfield
Segment 13	Harding Ave	Jefferson	Winfield
Segment 14	Ashby Dr	Roosevelt	Winfield
Segment 15	Winfield	Madison	Harding
Segment 16	Tyler Ave	Main St	Roosevelt
Segment 17	W 7th St	Monroe St	Broadway
Segment 18	Stonemason	Main St	Creston Meadow
Segment 19	Pennsylvania	Main St	End
Segment 20	Osage St	Pennsylvania	County Highway
Segment 21	Pierson St	Riley	Noble
Segment 22	Riley Ave	Main St	Tague St
Segment 23	Kara Ct	Tague	End
Segment 24	Sweetwater	Blue	Woodstream
Segment 25	Prairieview	Sweetwater	Woodstream
Segment 26	Brookstone	Sweetwater	Carlton
Segment 27	Willowview	Brookstone	Woodstream
Segment 28	Brookview Cir	Woodstream	End
Segment 29	Willowview Ct	Woodstream	End
Segment 30	New Rd and Apple Roundabout		
Segment 31	Franklin and Mckeznie Roundabout		



SCALE: 1" = 800'



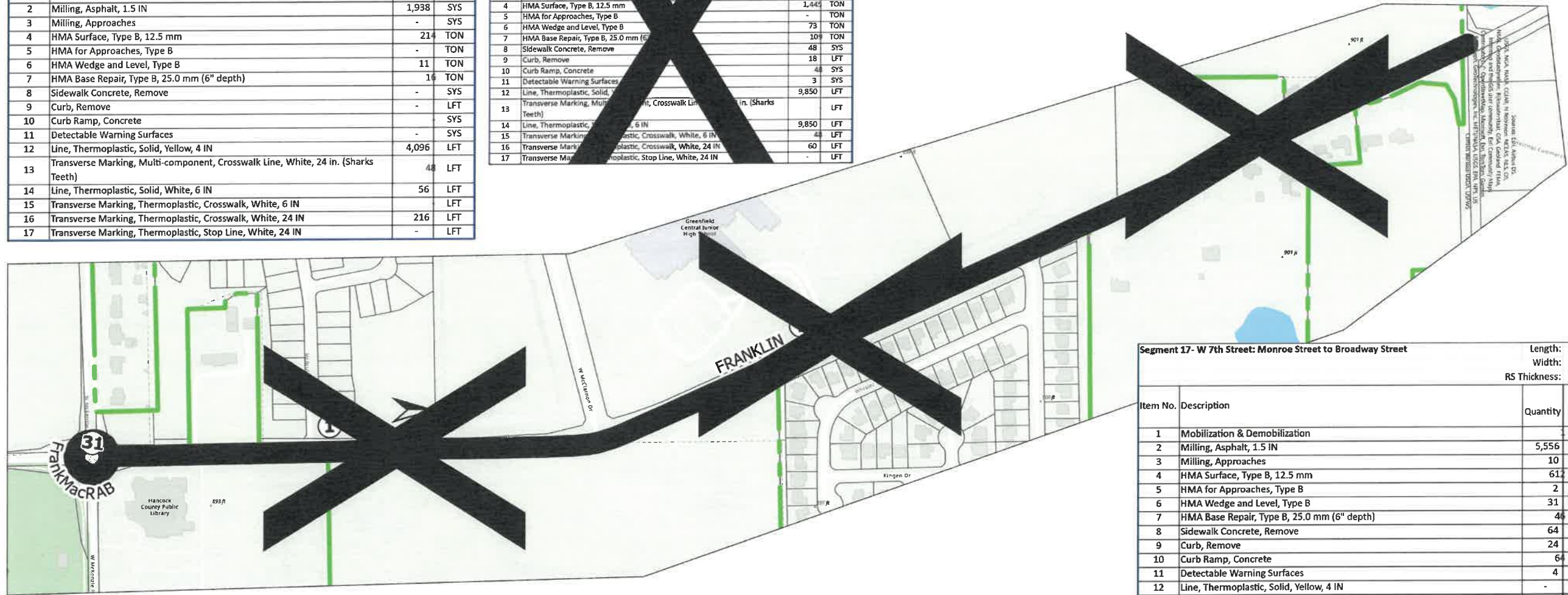
## 2025 Community Crossings Resurfacing

Sheet 1 of 8

Source: Esri, Airbyte DS, USGS, NOAA, NASA, CDOT, NHD, NCEAS, NLS, OS, NOAA, Geobase, Rijkswaterstaat, GSA, Geocent, FEMA, Intermap and the GIS User community, Esri Community Maps Contributors, Esri, TomTom, Garmin, SMI, Graph, GeoTechnologies, Inc, METI/NASA, USGS, EPA, NPS, US Census Bureau, USDA, USFWS

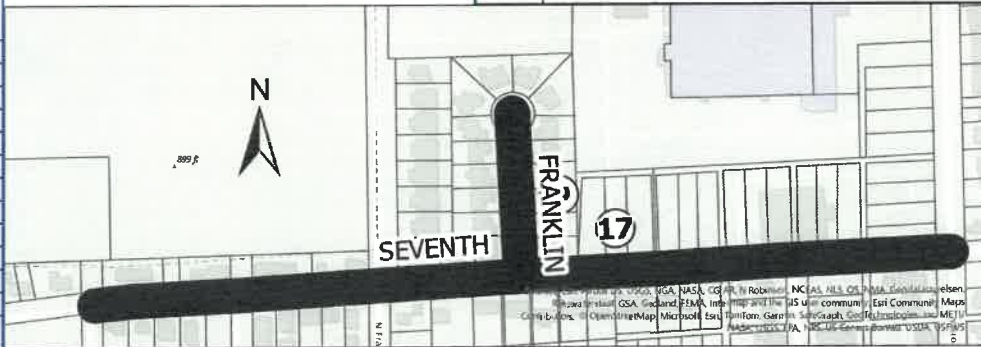
Segment 31- Franklin and Mckezie Roundabout			
		Length:	872
		Width:	20
		RS Thickness:	2
Item No.	Description	Quantity	Units
1	Mobilization & Demobilization	-	LS
2	Milling, Asphalt, 1.5 IN	1,938	SYS
3	Milling, Approaches	-	SYS
4	HMA Surface, Type B, 12.5 mm	214	TON
5	HMA for Approaches, Type B	-	TON
6	HMA Wedge and Level, Type B	11	TON
7	HMA Base Repair, Type B, 25.0 mm (6" depth)	16	TON
8	Sidewalk Concrete, Remove	-	SYS
9	Curb, Remove	-	LFT
10	Curb Ramp, Concrete	-	SYS
11	Detectable Warning Surfaces	-	SYS
12	Line, Thermoplastic, Solid, Yellow, 4 IN	4,096	LFT
13	Transverse Marking, Multi-component, Crosswalk Line, White, 24 in. (Sharks Teeth)	48	LFT
14	Line, Thermoplastic, Solid, White, 6 IN	56	LFT
15	Transverse Marking, Thermoplastic, Crosswalk, White, 6 IN	-	LFT
16	Transverse Marking, Thermoplastic, Crosswalk, White, 24 IN	216	LFT
17	Transverse Marking, Thermoplastic, Stop Line, White, 24 IN	-	LFT

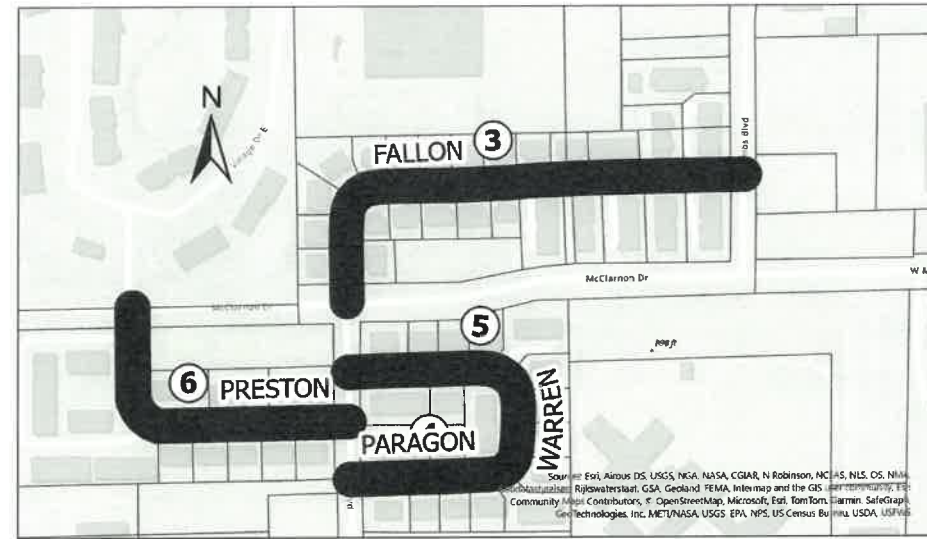
Segment 1- Franklin Street to McKenzie Road			
		Length:	4925
		Width:	24
		RS Thickness:	2
Item No.	Description	Quantity	Units
1	Mobilization & Demobilization	-	LS
2	Milling, Asphalt, 1.5 IN	13,134	SYS
3	Milling, Approaches	-	SYS
4	HMA Surface, Type B, 12.5 mm	1,445	TON
5	HMA for Approaches, Type B	-	TON
6	HMA Wedge and Level, Type B	73	TON
7	HMA Base Repair, Type B, 25.0 mm (6" depth)	109	TON
8	Sidewalk Concrete, Remove	48	SYS
9	Curb, Remove	18	LFT
10	Curb Ramp, Concrete	4	SYS
11	Detectable Warning Surfaces	3	SYS
12	Line, Thermoplastic, Solid, Yellow, 4 IN	9,850	LFT
13	Transverse Marking, Multi-component, Crosswalk Line, White, 24 in. (Sharks Teeth)	-	LFT
14	Line, Thermoplastic, Solid, White, 6 IN	9,850	LFT
15	Transverse Marking, Thermoplastic, Crosswalk, White, 6 IN	48	LFT
16	Transverse Marking, Thermoplastic, Crosswalk, White, 24 IN	60	LFT
17	Transverse Marking, Thermoplastic, Stop Line, White, 24 IN	-	LFT



Segment 17- W 7th Street: Monroe Street to Broadway Street			
		Length:	2000
		Width:	25
		RS Thickness:	2
Item No.	Description	Quantity	Units
1	Mobilization & Demobilization	-	LS
2	Milling, Asphalt, 1.5 IN	5,556	SYS
3	Milling, Approaches	10	SYS
4	HMA Surface, Type B, 12.5 mm	612	TON
5	HMA for Approaches, Type B	2	TON
6	HMA Wedge and Level, Type B	31	TON
7	HMA Base Repair, Type B, 25.0 mm (6" depth)	46	TON
8	Sidewalk Concrete, Remove	64	SYS
9	Curb, Remove	24	LFT
10	Curb Ramp, Concrete	6	SYS
11	Detectable Warning Surfaces	4	SYS
12	Line, Thermoplastic, Solid, Yellow, 4 IN	-	LFT
13	Transverse Marking, Multi-component, Crosswalk Line, White, 24 in. (Sharks Teeth)	-	LFT
14	Line, Thermoplastic, Solid, White, 6 IN	-	LFT
15	Transverse Marking, Thermoplastic, Crosswalk, White, 6 IN	100	LFT
16	Transverse Marking, Thermoplastic, Crosswalk, White, 24 IN	-	LFT
17	Transverse Marking, Thermoplastic, Stop Line, White, 24 IN	38	LFT

Segment 2- Franklin Court: W. 7th Street to End			
		Length:	400
		Width:	22
		RS Thickness:	2
Item No.	Description	Quantity	Units
1	Mobilization & Demobilization	-	LS
2	Milling, Asphalt, 1.5 IN	978	SYS
3	Milling, Approaches	9	SYS
4	HMA Surface, Type B, 12.5 mm	108	TON
5	HMA for Approaches, Type B	1	TON
6	HMA Wedge and Level, Type B	6	TON
7	HMA Base Repair, Type B, 25.0 mm (6" depth)	9	TON
8	Sidewalk Concrete, Remove	32	SYS
9	Curb, Remove	12	LFT
10	Curb Ramp, Concrete	3	SYS
11	Detectable Warning Surfaces	2	SYS
12	Line, Thermoplastic, Solid, Yellow, 4 IN	-	LFT
13	Transverse Marking, Multi-component, Crosswalk Line, White, 24 in. (Sharks Teeth)	-	LFT
14	Line, Thermoplastic, Solid, White, 6 IN	-	LFT
15	Transverse Marking, Thermoplastic, Crosswalk, White, 6 IN	44	LFT
16	Transverse Marking, Thermoplastic, Crosswalk, White, 24 IN	-	LFT
17	Transverse Marking, Thermoplastic, Stop Line, White, 24 IN	11	LFT





Segment 3- Fallon Lane: McClarnon Drive to Fields Boulevard		Length:	1120
		Width:	27
		RS Thickness:	2
Item No.	Description	Quantity	Units
1	Mobilization & Demobilization	-	LS
2	Milling, Asphalt, 1.5 IN	3,360	SYS
3	Milling, Approaches	6	SYS
4	HMA Surface, Type B, 12.5 mm	370	TON
5	HMA for Approaches, Type B	1	TON
6	HMA Wedge and Level, Type B	19	TON
7	HMA Base Repair, Type B, 25.0 mm (6" depth)	28	TON
8	Sidewalk Concrete, Remove	64	SYS
9	Curb, Remove	24	LFT
10	Curb Ramp, Concrete	64	SYS
11	Detectable Warning Surfaces	4	SYS
12	Line, Thermoplastic, Solid, Yellow, 4 IN	-	LFT
13	Transverse Marking, Multi-component, Crosswalk Line, White, 24 in. (Sharks Teeth)	-	LFT
14	Line, Thermoplastic, Solid, White, 6 IN	-	LFT
15	Transverse Marking, Thermoplastic, Crosswalk, White, 6 IN	108	LFT
16	Transverse Marking, Thermoplastic, Crosswalk, White, 24 IN	-	LFT
17	Transverse Marking, Thermoplastic, Stop Line, White, 24 IN	27	LFT

Segment 4- Paragon Way: Fields Boulevard to Warren Way		Length:	370
		Width:	27
		RS Thickness:	2
Item No.	Description	Quantity	Units
1	Mobilization & Demobilization	-	LS
2	Milling, Asphalt, 1.5 IN	1,110	SYS
3	Milling, Approaches	6	SYS
4	HMA Surface, Type B, 12.5 mm	123	TON
5	HMA for Approaches, Type B	1	TON
6	HMA Wedge and Level, Type B	7	TON
7	HMA Base Repair, Type B, 25.0 mm (6" depth)	10	TON
8	Sidewalk Concrete, Remove	32	SYS
9	Curb, Remove	12	LFT
10	Curb Ramp, Concrete	32	SYS
11	Detectable Warning Surfaces	2	SYS
12	Line, Thermoplastic, Solid, Yellow, 4 IN	-	LFT
13	Transverse Marking, Multi-component, Crosswalk Line, White, 24 in. (Sharks Teeth)	-	LFT
14	Line, Thermoplastic, Solid, White, 6 IN	-	LFT
15	Transverse Marking, Thermoplastic, Crosswalk, White, 6 IN	54	LFT
16	Transverse Marking, Thermoplastic, Crosswalk, White, 24 IN	-	LFT
17	Transverse Marking, Thermoplastic, Stop Line, White, 24 IN	14	LFT

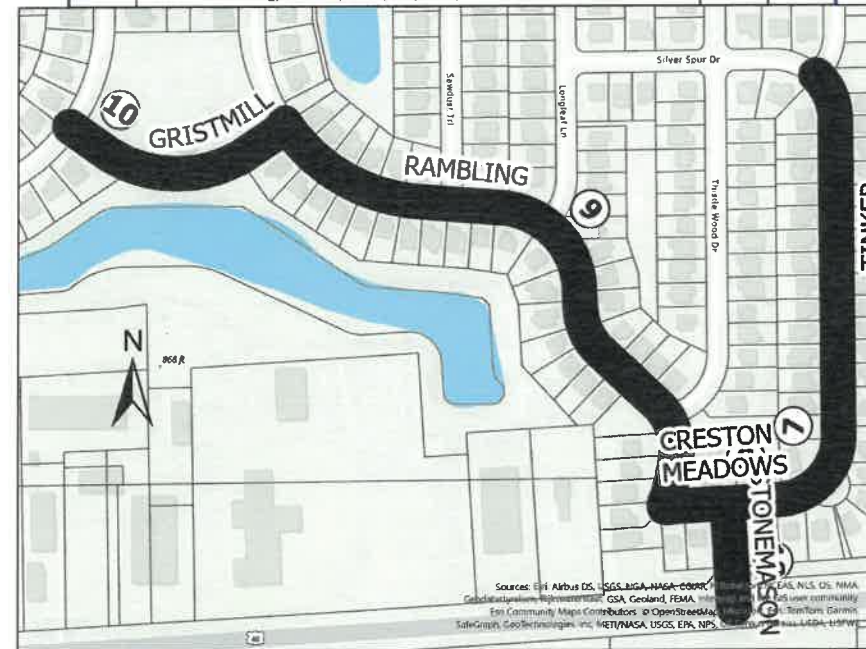
Segment 5- Warren Way: Fields Boulevard. to Paragon Way		Length:	560
		Width:	27
		RS Thickness:	2
Item No.	Description	Quantity	Units
1	Mobilization & Demobilization	-	LS
2	Milling, Asphalt, 1.5 IN	1,680	SYS
3	Milling, Approaches	6	SYS
4	HMA Surface, Type B, 12.5 mm	183	TON
5	HMA for Approaches, Type B	1	TON
6	HMA Wedge and Level, Type B	10	TON
7	HMA Base Repair, Type B, 25.0 mm (6" depth)	14	TON
8	Sidewalk Concrete, Remove	32	SYS
9	Curb, Remove	12	LFT
10	Curb Ramp, Concrete	32	SYS
11	Detectable Warning Surfaces	2	SYS
12	Line, Thermoplastic, Solid, Yellow, 4 IN	-	LFT
13	Transverse Marking, Multi-component, Crosswalk Line, White, 24 in. (Sharks Teeth)	-	LFT
14	Line, Thermoplastic, Solid, White, 6 IN	-	LFT
15	Transverse Marking, Thermoplastic, Crosswalk, White, 6 IN	54	LFT
16	Transverse Marking, Thermoplastic, Crosswalk, White, 24 IN	-	LFT
17	Transverse Marking, Thermoplastic, Stop Line, White, 24 IN	14	LFT

Segment 6- Preston Drive: McClarnon Drive to Fields Boulevard		Length:	720
		Width:	27
		RS Thickness:	2
Item No.	Description	Quantity	Units
1	Mobilization & Demobilization	-	LS
2	Milling, Asphalt, 1.5 IN	2,160	SYS
3	Milling, Approaches	14	SYS
4	HMA Surface, Type B, 12.5 mm	238	TON
5	HMA for Approaches, Type B	2	TON
6	HMA Wedge and Level, Type B	12	TON
7	HMA Base Repair, Type B, 25.0 mm (6" depth)	18	TON
8	Sidewalk Concrete, Remove	64	SYS
9	Curb, Remove	24	LFT
10	Curb Ramp, Concrete	64	SYS
11	Detectable Warning Surfaces	4	SYS
12	Line, Thermoplastic, Solid, Yellow, 4 IN	-	LFT
13	Transverse Marking, Multi-component, Crosswalk Line, White, 24 in. (Sharks Teeth)	-	LFT
14	Line, Thermoplastic, Solid, White, 6 IN	-	LFT
15	Transverse Marking, Thermoplastic, Crosswalk, White, 6 IN	108	LFT
16	Transverse Marking, Thermoplastic, Crosswalk, White, 24 IN	-	LFT
17	Transverse Marking, Thermoplastic, Stop Line, White, 24 IN	27	LFT

Segment 9- Rambling Road: Creston Meadow to Gristmill Drive			
		Length:	1475
		Width:	27
		RS Thickness:	2
Item No.	Description	Quantity	Units
1	Mobilization & Demobilization		LS
2	Milling, Asphalt, 1.5 IN	4,425	SYS
3	Milling, Approaches	-	SYS
4	HMA Surface, Type B, 12.5 mm	487	TON
5	HMA for Approaches, Type B	-	TON
6	HMA Wedge and Level, Type B	25	TON
7	HMA Base Repair, Type B, 25.0 mm (6" depth)	37	TON
8	Sidewalk Concrete, Remove	208	SYS
9	Curb, Remove	75	LFT
10	Curb Ramp, Concrete	208	SYS
11	Detectable Warning Surfaces	13	SYS
12	Line, Thermoplastic, Solid, Yellow, 4 IN	-	LFT
13	Transverse Marking, Multi-component, Crosswalk Line, White, 24 in. (Sharks Teeth)	-	LFT
14	Line, Thermoplastic, Solid, White, 6 IN	-	LFT
15	Transverse Marking, Thermoplastic, Crosswalk, White, 6 IN	54	LFT
16	Transverse Marking, Thermoplastic, Crosswalk, White, 24 IN	-	LFT
17	Transverse Marking, Thermoplastic, Stop Line, White, 24 IN	-	LFT

Segment 7- Tinker Trail: Creston Meadow to Rocky Road			
		Length:	920
		Width:	27
		RS Thickness:	2
Item No.	Description	Quantity	Units
1	Mobilization & Demobilization		LS
2	Milling, Asphalt, 1.5 IN	2,760	SYS
3	Milling, Approaches	-	SYS
4	HMA Surface, Type B, 12.5 mm	304	TON
5	HMA for Approaches, Type B	-	TON
6	HMA Wedge and Level, Type B	16	TON
7	HMA Base Repair, Type B, 25.0 mm (6" depth)	23	TON
8	Sidewalk Concrete, Remove	64	SYS
9	Curb, Remove	24	LFT
10	Curb Ramp, Concrete	64	SYS
11	Detectable Warning Surfaces	4	SYS
12	Line, Thermoplastic, Solid, Yellow, 4 IN	-	LFT
13	Transverse Marking, Multi-component, Crosswalk Line, White, 24 in. (Sharks Teeth)	-	LFT
14	Line, Thermoplastic, Solid, White, 6 IN	-	LFT
15	Transverse Marking, Thermoplastic, Crosswalk, White, 6 IN	-	LFT
16	Transverse Marking, Thermoplastic, Crosswalk, White, 24 IN	-	LFT
17	Transverse Marking, Thermoplastic, Stop Line, White, 24 IN	-	LFT

Segment 10- Gristmill Drive: Rambling Road to School House Drive			
		Length:	515
		Width:	27
		RS Thickness:	2
Item No.	Description	Quantity	Units
1	Mobilization & Demobilization		LS
2	Milling, Asphalt, 1.5 IN	1,545	SYS
3	Milling, Approaches	10	SYS
4	HMA Surface, Type B, 12.5 mm	170	TON
5	HMA for Approaches, Type B	2	TON
6	HMA Wedge and Level, Type B	9	TON
7	HMA Base Repair, Type B, 25.0 mm (6" depth)	13	TON
8	Sidewalk Concrete, Remove	32	SYS
9	Curb, Remove	12	LFT
10	Curb Ramp, Concrete	32	SYS
11	Detectable Warning Surfaces	2	SYS
12	Line, Thermoplastic, Solid, Yellow, 4 IN	-	LFT
13	Transverse Marking, Multi-component, Crosswalk Line, White, 24 in. (Sharks Teeth)	-	LFT
14	Line, Thermoplastic, Solid, White, 6 IN	-	LFT
15	Transverse Marking, Thermoplastic, Crosswalk, White, 6 IN	54	LFT
16	Transverse Marking, Thermoplastic, Crosswalk, White, 24 IN	-	LFT
17	Transverse Marking, Thermoplastic, Stop Line, White, 24 IN	14	LFT

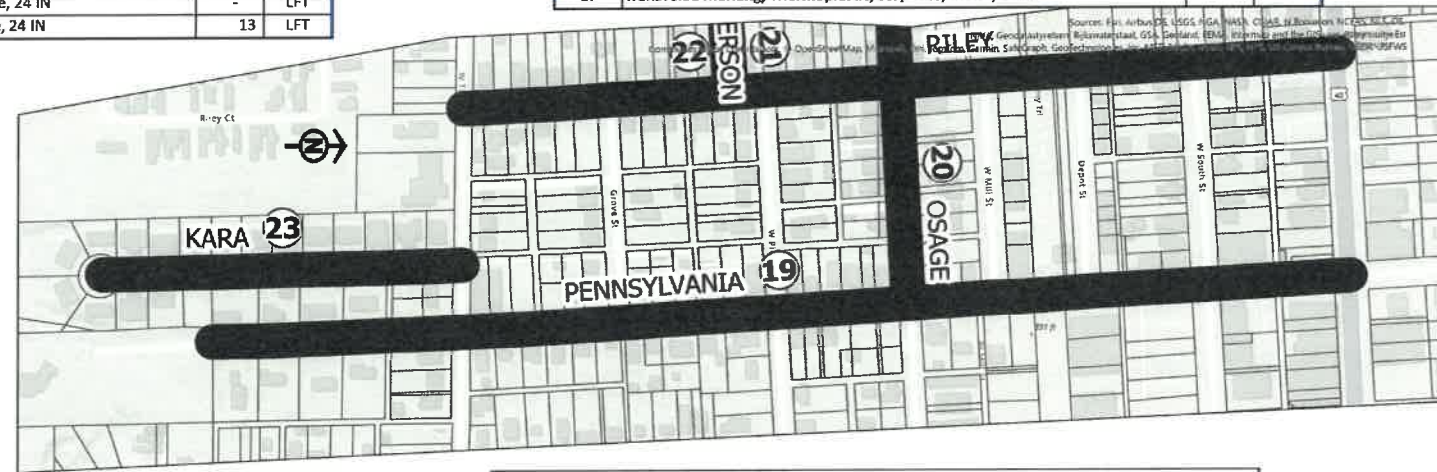


Segment 8- Creston Meadow: Tinker Trail to Rambling Road			
		Length:	390
		Width:	27
		RS Thickness:	2
Item No.	Description	Quantity	Units
1	Mobilization & Demobilization		LS
2	Milling, Asphalt, 1.5 IN	1,170	SYS
3	Milling, Approaches	12	SYS
4	HMA Surface, Type B, 12.5 mm	129	TON
5	HMA for Approaches, Type B	2	TON
6	HMA Wedge and Level, Type B	7	TON
7	HMA Base Repair, Type B, 25.0 mm (6" depth)	10	TON
8	Sidewalk Concrete, Remove	48	SYS
9	Curb, Remove	18	LFT
10	Curb Ramp, Concrete	48	SYS
11	Detectable Warning Surfaces	3	SYS
12	Line, Thermoplastic, Solid, Yellow, 4 IN	-	LFT
13	Transverse Marking, Multi-component, Crosswalk Line, White, 24 in. (Sharks Teeth)	-	LFT
14	Line, Thermoplastic, Solid, White, 6 IN	-	LFT
15	Transverse Marking, Thermoplastic, Crosswalk, White, 6 IN	-	LFT
16	Transverse Marking, Thermoplastic, Crosswalk, White, 24 IN	-	LFT
17	Transverse Marking, Thermoplastic, Stop Line, White, 24 IN	-	LFT

Segment 18- Stonemason Road: Main Street to Creston Meadow			
		Length:	180
		Width:	48
		RS Thickness:	2
Item No.	Description	Quantity	Units
1	Mobilization & Demobilization		LS
2	Milling, Asphalt, 1.5 IN	960	SYS
3	Milling, Approaches	8	SYS
4	HMA Surface, Type B, 12.5 mm	106	TON
5	HMA for Approaches, Type B	1	TON
6	HMA Wedge and Level, Type B	6	TON
7	HMA Base Repair, Type B, 25.0 mm (6" depth)	8	TON
8	Sidewalk Concrete, Remove	32	SYS
9	Curb, Remove	12	LFT
10	Curb Ramp, Concrete	32	SYS
11	Detectable Warning Surfaces	2	SYS
12	Line, Thermoplastic, Solid, Yellow, 4 IN	-	LFT
13	Transverse Marking, Multi-component, Crosswalk Line, White, 24 in. (Sharks Teeth)	-	LFT
14	Line, Thermoplastic, Solid, White, 6 IN	-	LFT
15	Transverse Marking, Thermoplastic, Crosswalk, White, 6 IN	192	LFT
16	Transverse Marking, Thermoplastic, Crosswalk, White, 24 IN	-	LFT
17	Transverse Marking, Thermoplastic, Stop Line, White, 24 IN	48	LFT

Segment 23- Kara Court: Tague Street to End			
		Length:	857
		Width:	26
		RS Thickness:	2
Item No.	Description	Quantity	Units
1	Mobilization & Demobilization	-	LS
2	Milling, Asphalt, 1.5 IN	2,476	SYS
3	Milling, Approaches	5	SYS
4	HMA Surface, Type B, 12.5 mm	273	TON
5	HMA for Approaches, Type B	1	TON
6	HMA Wedge and Level, Type B	14	TON
7	HMA Base Repair, Type B, 25.0 mm (6" depth)	21	TON
8	Sidewalk Concrete, Remove	-	SYS
9	Curb, Remove	-	LFT
10	Curb Ramp, Concrete	-	SYS
11	Detectable Warning Surfaces	-	SYS
12	Line, Thermoplastic, Solid, Yellow, 4 IN	-	LFT
13	Transverse Marking, Multi-component, Crosswalk Line, White, 24 in. (Sharks Teeth)	-	LFT
14	Line, Thermoplastic, Solid, White, 6 IN	-	LFT
15	Transverse Marking, Thermoplastic, Crosswalk, White, 6 IN	52	LFT
16	Transverse Marking, Thermoplastic, Crosswalk, White, 24 IN	-	LFT
17	Transverse Marking, Thermoplastic, Stop Line, White, 24 IN	13	LFT

Segment 22- Riley Avenue: Main Street to Tague Street			
		Length:	2000
		Width:	26
		RS Thickness:	2
Item No.	Description	Quantity	Units
1	Mobilization & Demobilization	-	LS
2	Milling, Asphalt, 1.5 IN	5,778	SYS
3	Milling, Approaches	7	SYS
4	HMA Surface, Type B, 12.5 mm	636	TON
5	HMA for Approaches, Type B	1	TON
6	HMA Wedge and Level, Type B	32	TON
7	HMA Base Repair, Type B, 25.0 mm (6" depth)	48	TON
8	Sidewalk Concrete, Remove	224	SYS
9	Curb, Remove	84	LFT
10	Curb Ramp, Concrete	224	SYS
11	Detectable Warning Surfaces	14	SYS
12	Line, Thermoplastic, Solid, Yellow, 4 IN	-	LFT
13	Transverse Marking, Multi-component, Crosswalk Line, White, 24 in. (Sharks Teeth)	-	LFT
14	Line, Thermoplastic, Solid, White, 6 IN	-	LFT
15	Transverse Marking, Thermoplastic, Crosswalk, White, 6 IN	260	LFT
16	Transverse Marking, Thermoplastic, Crosswalk, White, 24 IN	-	LFT
17	Transverse Marking, Thermoplastic, Stop Line, White, 24 IN	52	LFT



Segment 19- Pennsylvania Street: Main Street to End			
		Length:	2630
		Width:	38
		RS Thickness:	2
Item No.	Description	Quantity	Units
1	Mobilization & Demobilization	-	LS
2	Milling, Asphalt, 1.5 IN	11,105	SYS
3	Milling, Approaches	-	SYS
4	HMA Surface, Type B, 12.5 mm	1,222	TON
5	HMA for Approaches, Type B	-	TON
6	HMA Wedge and Level, Type B	62	TON
7	HMA Base Repair, Type B, 25.0 mm (6" depth)	92	TON
8	Sidewalk Concrete, Remove	128	SYS
9	Curb, Remove	48	LFT
10	Curb Ramp, Concrete	128	SYS
11	Detectable Warning Surfaces	8	SYS
12	Line, Thermoplastic, Solid, Yellow, 4 IN	5,260	LFT
13	Transverse Marking, Multi-component, Crosswalk Line, White, 24 in. (Sharks Teeth)	-	LFT
14	Line, Thermoplastic, Solid, White, 6 IN	-	LFT
15	Transverse Marking, Thermoplastic, Crosswalk, White, 6 IN	608	LFT
16	Transverse Marking, Thermoplastic, Crosswalk, White, 24 IN	60	LFT
17	Transverse Marking, Thermoplastic, Stop Line, White, 24 IN	57	LFT

Segment 14- Ashby Drive: Roosevelt Drive to Winfield Street			
		Length:	925
		Width:	27
		RS Thickness:	2
Item No.	Description	Quantity	Units
1	Mobilization & Demobilization		LS
2	Milling, Asphalt, 1.5 IN	2,775	SYS
3	Milling, Approaches	7	SYS
4	HMA Surface, Type B, 12.5 mm	306	TON
5	HMA for Approaches, Type B	1	TON
6	HMA Wedge and Level, Type B	16	TON
7	HMA Base Repair, Type B, 25.0 mm (6" depth)	23	TON
8	Sidewalk Concrete, Remove	64	SYS
9	Curb, Remove	24	LFT
10	Curb Ramp, Concrete	64	SYS
11	Detectable Warning Surfaces	4	SYS
12	Line, Thermoplastic, Solid, Yellow, 4 IN	-	LFT
13	Transverse Marking, Multi-component, Crosswalk Line, White, 24 in. (Sharks Teeth)		LFT
14	Line, Thermoplastic, Solid, White, 6 IN	-	LFT
15	Transverse Marking, Thermoplastic, Crosswalk, White, 6 IN	108	LFT
16	Transverse Marking, Thermoplastic, Crosswalk, White, 24 IN	-	LFT
17	Transverse Marking, Thermoplastic, Stop Line, White, 24 IN	27	LFT

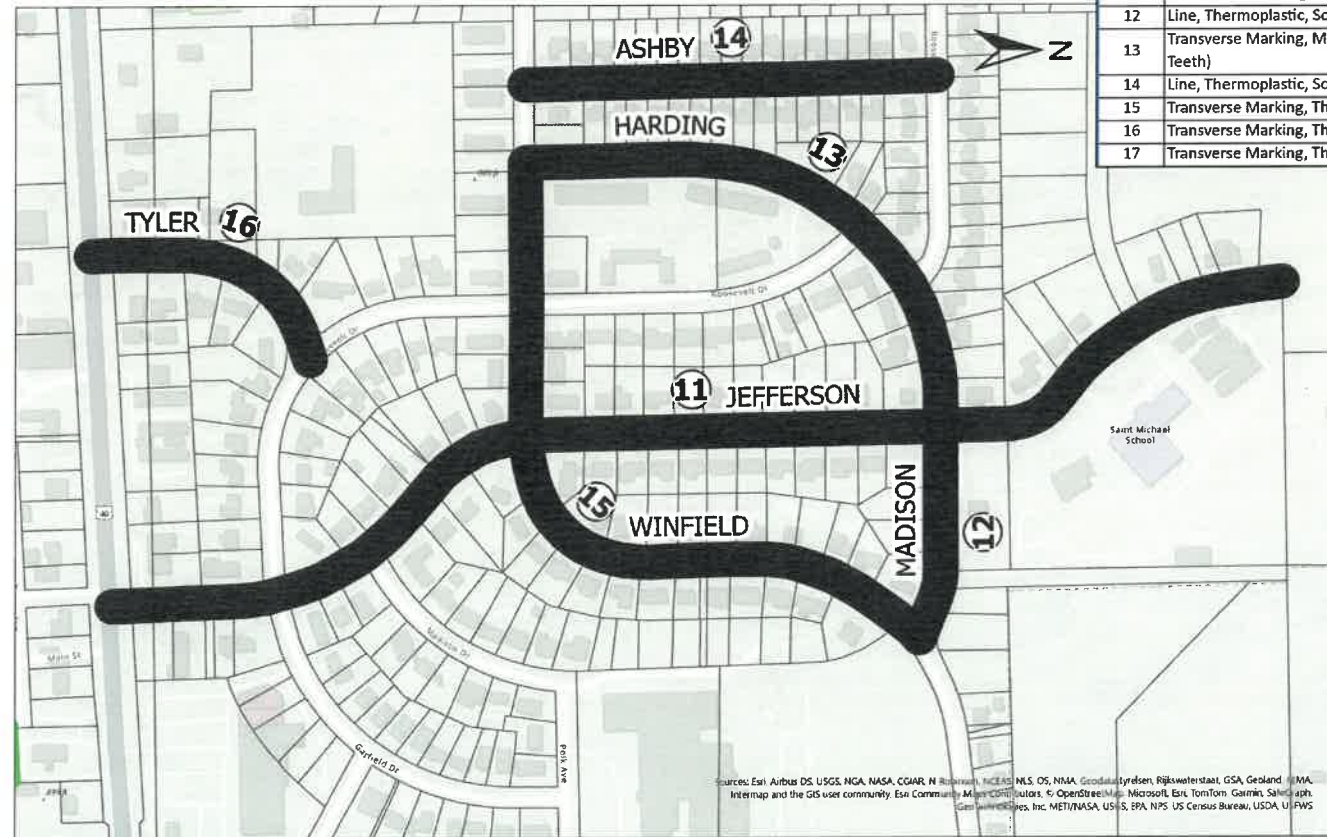
Segment 13- Harding Avenue: Jefferson Boulevard to Winfield Street			
		Length:	1300
		Width:	26
		RS Thickness:	2
Item No.	Description	Quantity	Units
1	Mobilization & Demobilization		LS
2	Milling, Asphalt, 1.5 IN	3,756	SYS
3	Milling, Approaches	6	SYS
4	HMA Surface, Type B, 12.5 mm	414	TON
5	HMA for Approaches, Type B	1	TON
6	HMA Wedge and Level, Type B	21	TON
7	HMA Base Repair, Type B, 25.0 mm (6" depth)	31	TON
8	Sidewalk Concrete, Remove	32	SYS
9	Curb, Remove	12	LFT
10	Curb Ramp, Concrete	32	SYS
11	Detectable Warning Surfaces	2	SYS
12	Line, Thermoplastic, Solid, Yellow, 4 IN	-	LFT
13	Transverse Marking, Multi-component, Crosswalk Line, White, 24 in. (Sharks Teeth)		LFT
14	Line, Thermoplastic, Solid, White, 6 IN	-	LFT
15	Transverse Marking, Thermoplastic, Crosswalk, White, 6 IN	-	LFT
16	Transverse Marking, Thermoplastic, Crosswalk, White, 24 IN	-	LFT
17	Transverse Marking, Thermoplastic, Stop Line, White, 24 IN	13	LFT

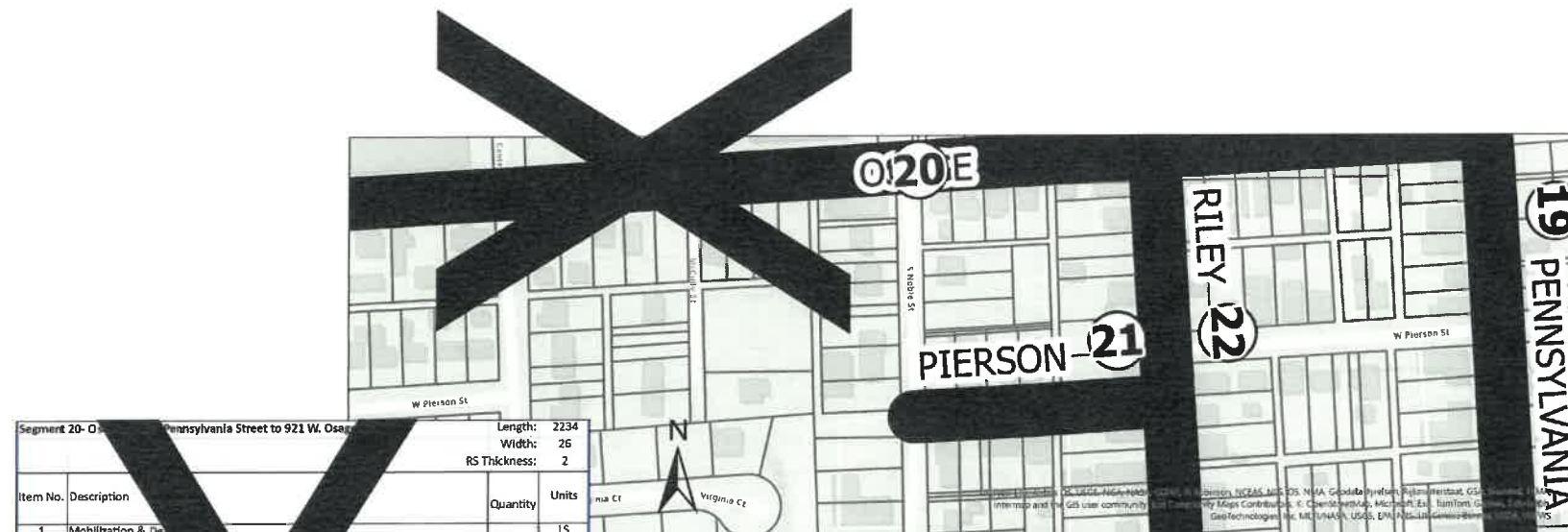
Segment 11- Jefferson Boulevard: Main Street to End			
		Length:	2943
		Width:	33
		RS Thickness:	2
Item No.	Description	Quantity	Units
1	Mobilization & Demobilization		LS
2	Milling, Asphalt, 1.5 IN	10,791	SYS
3	Milling, Approaches	4	SYS
4	HMA Surface, Type B, 12.5 mm	1,188	TON
5	HMA for Approaches, Type B	1	TON
6	HMA Wedge and Level, Type B	60	TON
7	HMA Base Repair, Type B, 25.0 mm (6" depth)	90	TON
8	Sidewalk Concrete, Remove	208	SYS
9	Curb, Remove	78	LFT
10	Curb Ramp, Concrete	208	SYS
11	Detectable Warning Surfaces	13	SYS
12	Line, Thermoplastic, Solid, Yellow, 4 IN	-	LFT
13	Transverse Marking, Multi-component, Crosswalk Line, White, 24 in. (Sharks Teeth)		LFT
14	Line, Thermoplastic, Solid, White, 6 IN	-	LFT
15	Transverse Marking, Thermoplastic, Crosswalk, White, 6 IN	726	LFT
16	Transverse Marking, Thermoplastic, Crosswalk, White, 24 IN	-	LFT
17	Transverse Marking, Thermoplastic, Stop Line, White, 24 IN	116	LFT

Segment 16- Tyler Avenue: Main Street to Roosevelt Drive			
		Length:	575
		Width:	36
		RS Thickness:	2
Item No.	Description	Quantity	Units
1	Mobilization & Demobilization		LS
2	Milling, Asphalt, 1.5 IN	2,300	SYS
3	Milling, Approaches	13	SYS
4	HMA Surface, Type B, 12.5 mm	253	TON
5	HMA for Approaches, Type B	2	TON
6	HMA Wedge and Level, Type B	13	TON
7	HMA Base Repair, Type B, 25.0 mm (6" depth)	19	TON
8	Sidewalk Concrete, Remove	48	SYS
9	Curb, Remove	18	LFT
10	Curb Ramp, Concrete	48	SYS
11	Detectable Warning Surfaces	3	SYS
12	Line, Thermoplastic, Solid, Yellow, 4 IN	-	LFT
13	Transverse Marking, Multi-component, Crosswalk Line, White, 24 in. (Sharks Teeth)		LFT
14	Line, Thermoplastic, Solid, White, 6 IN	-	LFT
15	Transverse Marking, Thermoplastic, Crosswalk, White, 6 IN	-	LFT
16	Transverse Marking, Thermoplastic, Crosswalk, White, 24 IN	-	LFT
17	Transverse Marking, Thermoplastic, Stop Line, White, 24 IN	18	LFT

Segment 12- Madison Street: Jefferson Boulevard to Winfield Street			
		Length:	445
		Width:	32
		RS Thickness:	2
Item No.	Description	Quantity	Units
1	Mobilization & Demobilization		LS
2	Milling, Asphalt, 1.5 IN	1,583	SYS
3	Milling, Approaches	13	SYS
4	HMA Surface, Type B, 12.5 mm	175	TON
5	HMA for Approaches, Type B	2	TON
6	HMA Wedge and Level, Type B	9	TON
7	HMA Base Repair, Type B, 25.0 mm (6" depth)	14	TON
8	Sidewalk Concrete, Remove	32	SYS
9	Curb, Remove	12	LFT
10	Curb Ramp, Concrete	32	SYS
11	Detectable Warning Surfaces	2	SYS
12	Line, Thermoplastic, Solid, Yellow, 4 IN	-	LFT
13	Transverse Marking, Multi-component, Crosswalk Line, White, 24 in. (Sharks Teeth)		LFT
14	Line, Thermoplastic, Solid, White, 6 IN	-	LFT
15	Transverse Marking, Thermoplastic, Crosswalk, White, 6 IN	120	LFT
16	Transverse Marking, Thermoplastic, Crosswalk, White, 24 IN	-	LFT
17	Transverse Marking, Thermoplastic, Stop Line, White, 24 IN	32	LFT

Segment 15- Winfield Street: Madison Avenue to Harding Avenue			
		Length:	1850
		Width:	28
		RS Thickness:	2
Item No.	Description	Quantity	Units
1	Mobilization & Demobilization		LS
2	Milling, Asphalt, 1.5 IN	5,756	SYS
3	Milling, Approaches	-	SYS
4	HMA Surface, Type B, 12.5 mm	634	TON
5	HMA for Approaches, Type B	-	TON
6	HMA Wedge and Level, Type B	32	TON
7	HMA Base Repair, Type B, 25.0 mm (6" depth)	48	TON
8	Sidewalk Concrete, Remove	64	SYS
9	Curb, Remove	24	LFT
10	Curb Ramp, Concrete	64	SYS
11	Detectable Warning Surfaces	4	SYS
12	Line, Thermoplastic, Solid, Yellow, 4 IN	-	LFT
13	Transverse Marking, Multi-component, Crosswalk Line, White, 24 in. (Sharks Teeth)		LFT
14	Line, Thermoplastic, Solid, White, 6 IN	-	LFT
15	Transverse Marking, Thermoplastic, Crosswalk, White, 6 IN	224	LFT
16	Transverse Marking, Thermoplastic, Crosswalk, White, 24 IN	-	LFT
17	Transverse Marking, Thermoplastic, Stop Line, White, 24 IN	-	LFT



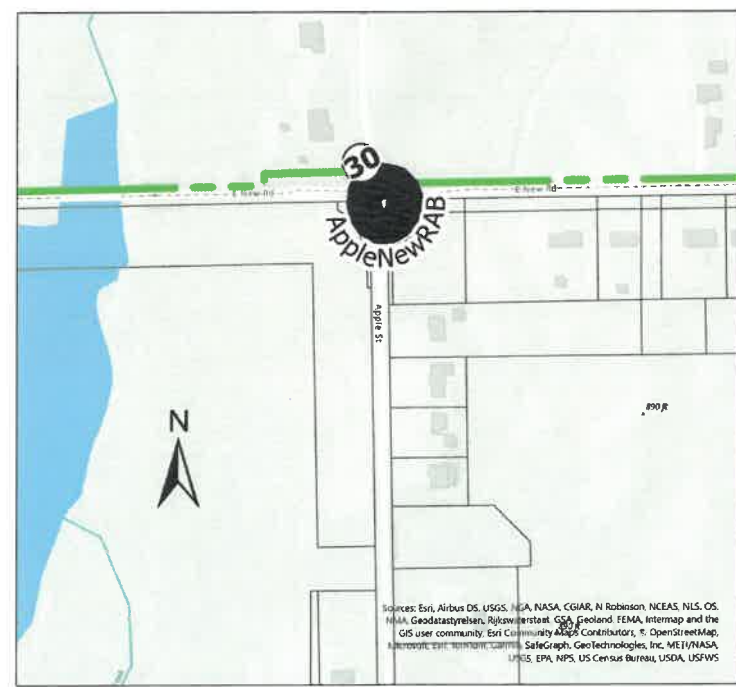


**Segment 20-0 - Pennsylvania Street to 921 W. Osgood Street** Length: 2234  
Width: 26  
RS Thickness: 2

Item No.	Description	Quantity	Units
1	Mobilization & Demobilization	-	LS
2	Milling, Asphalt, 1.5 IN	6,454	SYS
3	Milling, Approaches	10	SYS
4	HMA Surface, Type B, 12.5 mm	710	TON
5	HMA for Approaches, Type B	2	TON
6	HMA Wedge and Level, Type B	36	TON
7	HMA Base Repair, Type B, 25.0 mm (6" depth)	5	TON
8	Sidewalk Concrete, Remove	224	SYS
9	Curb, Remove	84	LFT
10	Curb Ramp, Concrete	22	SYS
11	Detectable Warning Surfaces	14	SYS
12	Line, Thermoplastic, Solid, Yellow, 4 IN	-	LFT
13	Transverse Marking, Multi-component, Crosswalk Line, White, 24 in. (Sharks Teeth)	-	LFT
14	Line, Thermoplastic, Solid, White, 6 IN	-	LFT
15	Transverse Marking, Thermoplastic, Crosswalk, White, 6 IN	20	LFT
16	Transverse Marking, Thermoplastic, Crosswalk, White, 24 IN	-	LFT
17	Transverse Marking, Thermoplastic, Stop Line, White, 24 IN	65	LFT

**Segment 21- Pierson Street: Riley Avenue to Noble Street** Length: 370  
Width: 20  
RS Thickness: 2

Item No.	Description	Quantity	Units
1	Mobilization & Demobilization	-	LS
2	Milling, Asphalt, 1.5 IN	823	SYS
3	Milling, Approaches	10	SYS
4	HMA Surface, Type B, 12.5 mm	9	TON
5	HMA for Approaches, Type B	2	TON
6	HMA Wedge and Level, Type B	5	TON
7	HMA Base Repair, Type B, 25.0 mm (6" depth)	7	TON
8	Sidewalk Concrete, Remove	128	SYS
9	Curb, Remove	48	LFT
10	Curb Ramp, Concrete	12	SYS
11	Detectable Warning Surfaces	8	SYS
12	Line, Thermoplastic, Solid, Yellow, 4 IN	-	LFT
13	Transverse Marking, Multi-component, Crosswalk Line, White, 24 in. (Sharks Teeth)	-	LFT
14	Line, Thermoplastic, Solid, White, 6 IN	-	LFT
15	Transverse Marking, Thermoplastic, Crosswalk, White, 6 IN	80	LFT
16	Transverse Marking, Thermoplastic, Crosswalk, White, 24 IN	-	LFT
17	Transverse Marking, Thermoplastic, Stop Line, White, 24 IN	20	LFT



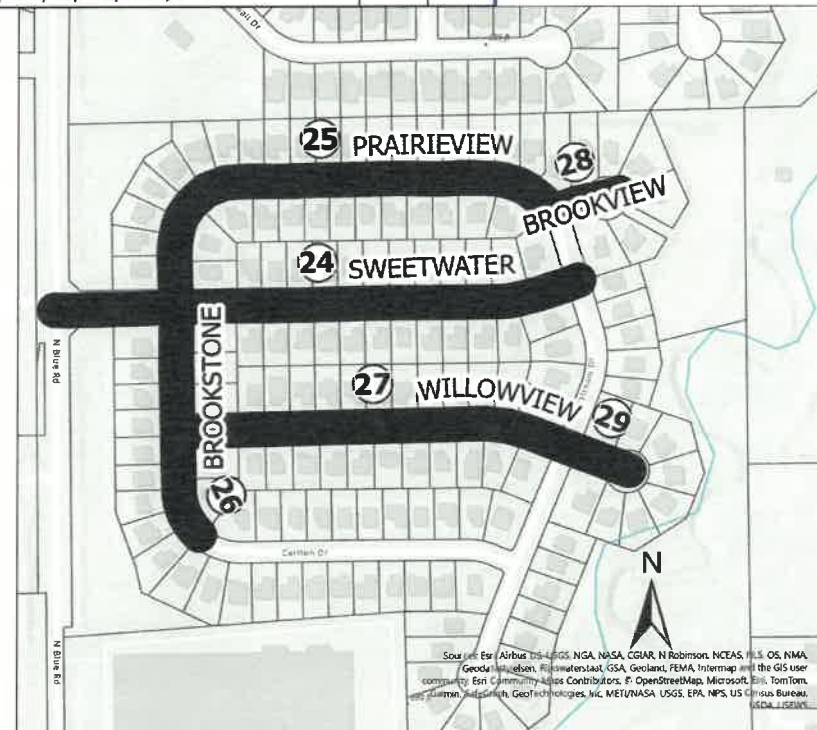
**Segment 30- New Rd and Apple Roundabout** Length: 1912  
Width: 22  
RS Thickness: 2

Item No.	Description	Quantity	Units
1	Mobilization & Demobilization	-	LS
2	Milling, Asphalt, 1.5 IN	4,674	SYS
3	Milling, Approaches	-	SYS
4	HMA Surface, Type B, 12.5 mm	515	TON
5	HMA for Approaches, Type B	-	TON
6	HMA Wedge and Level, Type B	26	TON
7	HMA Base Repair, Type B, 25.0 mm (6" depth)	39	TON
8	Sidewalk Concrete, Remove	-	SYS
9	Curb, Remove	-	LFT
10	Curb Ramp, Concrete	-	SYS
11	Detectable Warning Surfaces	-	SYS
12	Line, Thermoplastic, Solid, Yellow, 4 IN	1,000	LFT
13	Transverse Marking, Multi-component, Crosswalk Line, White, 24 in. (Sharks Teeth)	48	LFT
14	Line, Thermoplastic, Solid, White, 6 IN	506	LFT
15	Transverse Marking, Thermoplastic, Crosswalk, White, 6 IN	-	LFT
16	Transverse Marking, Thermoplastic, Crosswalk, White, 24 IN	216	LFT
17	Transverse Marking, Thermoplastic, Stop Line, White, 24 IN	-	LFT

Segment 25- Prairieview Lane: Sweetwater Lane to Woodstream Drive			
		Length:	1110
		Width:	28
		RS Thickness:	2
Item No.	Description	Quantity	Units
1	Mobilization & Demobilization		LS
2	Milling, Asphalt, 1.5 IN	3,454	SYS
3	Milling, Approaches	10	SYS
4	HMA Surface, Type B, 12.5 mm	380	TON
5	HMA for Approaches, Type B	2	TON
6	HMA Wedge and Level, Type B	19	TON
7	HMA Base Repair, Type B, 25.0 mm (6" depth)	29	TON
8	Sidewalk Concrete, Remove	32	SYS
9	Curb, Remove	12	LFT
10	Curb Ramp, Concrete	32	SYS
11	Detectable Warning Surfaces	2	SYS
12	Line, Thermoplastic, Solid, Yellow, 4 IN	-	LFT
13	Transverse Marking, Multi-component, Crosswalk Line, White, 24 in. (Sharks Teeth)		LFT
14	Line, Thermoplastic, Solid, White, 6 IN	-	LFT
15	Transverse Marking, Thermoplastic, Crosswalk, White, 6 IN	56	LFT
16	Transverse Marking, Thermoplastic, Crosswalk, White, 24 IN	-	LFT
17	Transverse Marking, Thermoplastic, Stop Line, White, 24 IN	14	LFT

Segment 24- Sweetwater Lane: Blue Road to Woodstream Drive			
		Length:	1179
		Width:	28
		RS Thickness:	2
Item No.	Description	Quantity	Units
1	Mobilization & Demobilization		LS
2	Milling, Asphalt, 1.5 IN	3,668	SYS
3	Milling, Approaches	25	SYS
4	HMA Surface, Type B, 12.5 mm	404	TON
5	HMA for Approaches, Type B	3	TON
6	HMA Wedge and Level, Type B	21	TON
7	HMA Base Repair, Type B, 25.0 mm (6" depth)	3	TON
8	Sidewalk Concrete, Remove	128	SYS
9	Curb, Remove	48	LFT
10	Curb Ramp, Concrete	128	SYS
11	Detectable Warning Surfaces	8	SYS
12	Line, Thermoplastic, Solid, Yellow, 4 IN	-	LFT
13	Transverse Marking, Multi-component, Crosswalk Line, White, 24 in. (Sharks Teeth)		LFT
14	Line, Thermoplastic, Solid, White, 6 IN	-	LFT
15	Transverse Marking, Thermoplastic, Crosswalk, White, 6 IN	224	LFT
16	Transverse Marking, Thermoplastic, Crosswalk, White, 24 IN	-	LFT
17	Transverse Marking, Thermoplastic, Stop Line, White, 24 IN	28	LFT

Segment 26- Brookstone Drive: Sweetwater Lane to Carlton Drive			
		Length:	552
		Width:	28
		RS Thickness:	2
Item No.	Description	Quantity	Units
1	Mobilization & Demobilization		LS
2	Milling, Asphalt, 1.5 IN	1,718	SYS
3	Milling, Approaches	15	SYS
4	HMA Surface, Type B, 12.5 mm	189	TON
5	HMA for Approaches, Type B	2	TON
6	HMA Wedge and Level, Type B	10	TON
7	HMA Base Repair, Type B, 25.0 mm (6" depth)	15	TON
8	Sidewalk Concrete, Remove	64	SYS
9	Curb, Remove	24	LFT
10	Curb Ramp, Concrete	64	SYS
11	Detectable Warning Surfaces	4	SYS
12	Line, Thermoplastic, Solid, Yellow, 4 IN	-	LFT
13	Transverse Marking, Multi-component, Crosswalk Line, White, 24 in. (Sharks Teeth)		LFT
14	Line, Thermoplastic, Solid, White, 6 IN	-	LFT
15	Transverse Marking, Thermoplastic, Crosswalk, White, 6 IN		LFT
16	Transverse Marking, Thermoplastic, Crosswalk, White, 24 IN		LFT
17	Transverse Marking, Thermoplastic, Stop Line, White, 24 IN	14	LFT



Segment 27- Willowview Lane: Brookstone Drive to Woodstream Drive			
		Length:	877
		Width:	28
		RS Thickness:	2
Item No.	Description	Quantity	Units
1	Mobilization & Demobilization		LS
2	Milling, Asphalt, 1.5 IN	2,729	SYS
3	Milling, Approaches	10	SYS
4	HMA Surface, Type B, 12.5 mm	30	TON
5	HMA for Approaches, Type B	2	TON
6	HMA Wedge and Level, Type B	16	TON
7	HMA Base Repair, Type B, 25.0 mm (6" depth)	23	TON
8	Sidewalk Concrete, Remove	-	SYS
9	Curb, Remove	-	LFT
10	Curb Ramp, Concrete		SYS
11	Detectable Warning Surfaces	-	SYS
12	Line, Thermoplastic, Solid, Yellow, 4 IN	-	LFT
13	Transverse Marking, Multi-component, Crosswalk Line, White, 24 in. (Sharks Teeth)		LFT
14	Line, Thermoplastic, Solid, White, 6 IN	-	LFT
15	Transverse Marking, Thermoplastic, Crosswalk, White, 6 IN	112	LFT
16	Transverse Marking, Thermoplastic, Crosswalk, White, 24 IN	-	LFT
17	Transverse Marking, Thermoplastic, Stop Line, White, 24 IN	28	LFT

Segment 28- Brookview Circle: Woodstream Drive to End			
		Length:	133
		Width:	28
		RS Thickness:	2
Item No.	Description	Quantity	Units
1	Mobilization & Demobilization		LS
2	Milling, Asphalt, 1.5 IN	414	SYS
3	Milling, Approaches	5	SYS
4	HMA Surface, Type B, 12.5 mm	46	TON
5	HMA for Approaches, Type B	1	TON
6	HMA Wedge and Level, Type B	3	TON
7	HMA Base Repair, Type B, 25.0 mm (6" depth)	4	TON
8	Sidewalk Concrete, Remove	-	SYS
9	Curb, Remove	-	LFT
10	Curb Ramp, Concrete		SYS
11	Detectable Warning Surfaces	-	SYS
12	Line, Thermoplastic, Solid, Yellow, 4 IN	-	LFT
13	Transverse Marking, Multi-component, Crosswalk Line, White, 24 in. (Sharks Teeth)		LFT
14	Line, Thermoplastic, Solid, White, 6 IN	-	LFT
15	Transverse Marking, Thermoplastic, Crosswalk, White, 6 IN	56	LFT
16	Transverse Marking, Thermoplastic, Crosswalk, White, 24 IN	-	LFT
17	Transverse Marking, Thermoplastic, Stop Line, White, 24 IN	14	LFT

Segment 29- Willowview Court: Woodstream Drive to End			
		Length:	178
		Width:	28
		RS Thickness:	2
Item No.	Description	Quantity	Units
1	Mobilization & Demobilization		LS
2	Milling, Asphalt, 1.5 IN	554	SYS
3	Milling, Approaches	5	SYS
4	HMA Surface, Type B, 12.5 mm	6	TON
5	HMA for Approaches, Type B	1	TON
6	HMA Wedge and Level, Type B	4	TON
7	HMA Base Repair, Type B, 25.0 mm (6" depth)	5	TON
8	Sidewalk Concrete, Remove	-	SYS
9	Curb, Remove	-	LFT
10	Curb Ramp, Concrete		SYS
11	Detectable Warning Surfaces	-	SYS
12	Line, Thermoplastic, Solid, Yellow, 4 IN	-	LFT
13	Transverse Marking, Multi-component, Crosswalk Line, White, 24 in. (Sharks Teeth)		LFT
14	Line, Thermoplastic, Solid, White, 6 IN	-	LFT
15	Transverse Marking, Thermoplastic, Crosswalk, White, 6 IN	56	LFT
16	Transverse Marking, Thermoplastic, Crosswalk, White, 24 IN	-	LFT
17	Transverse Marking, Thermoplastic, Stop Line, White, 24 IN	14	LFT